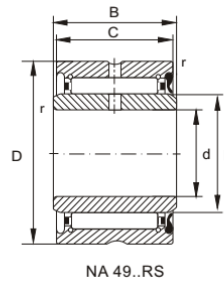


## NA49...RS Series



Bearing No.	Boundary dimensions [mm]					Basic load ratings(kN)		Limiting speed(rpm ) Oil	Mass Kg
	d	Fw(F)	D	C	B	Dynamic(Cr)	Static(Cor)		
NA4900-RS	10	14	22	13	14	4560	4660	13000	24.5
NA4901-RS	12	16	24	13	14	5980	9500	12000	27.5
NA4902-RS	15	20	28	13	14	5980	9500	10000	37
NA4903-RS	17	22	30	13	14	6050	10100	9000	40
NA4904-RS	20	25	37	17	18	14900	17500	7500	80
NA4905-RS	25	30	42	17	18	16300	21500	6500	89.5
NA4906-RS	30	35	47	17	18	20050	24900	5500	104
NA4907-RS	35	42	55	20	21	22500	37000	4800	175
NA4908-RS	40	48	62	22	23	33050	50900	4200	252
NA4909-RS	45	52	68	22	23	34800	56800	3900	290
NA4910-RS	50	58	72	22	23	37800	61500	3500	295